



OFFSHORE WIND ENERGY UK SUPPLY CHAIN EVENTS:

Dermot Grimson

Head of External Affairs, The Crown Estate



The Crown Estate

- “ 2008 Capital Value of £7.3bn
- “ Net revenue all paid to UK Treasury £200 Million +
- “ The Crown Estate is a landowner not a regulator. It is not part of Government but works closely with Government Departments, the devolved administrations, statutory bodies and other key stakeholders.



**THE CROWN
ESTATE**

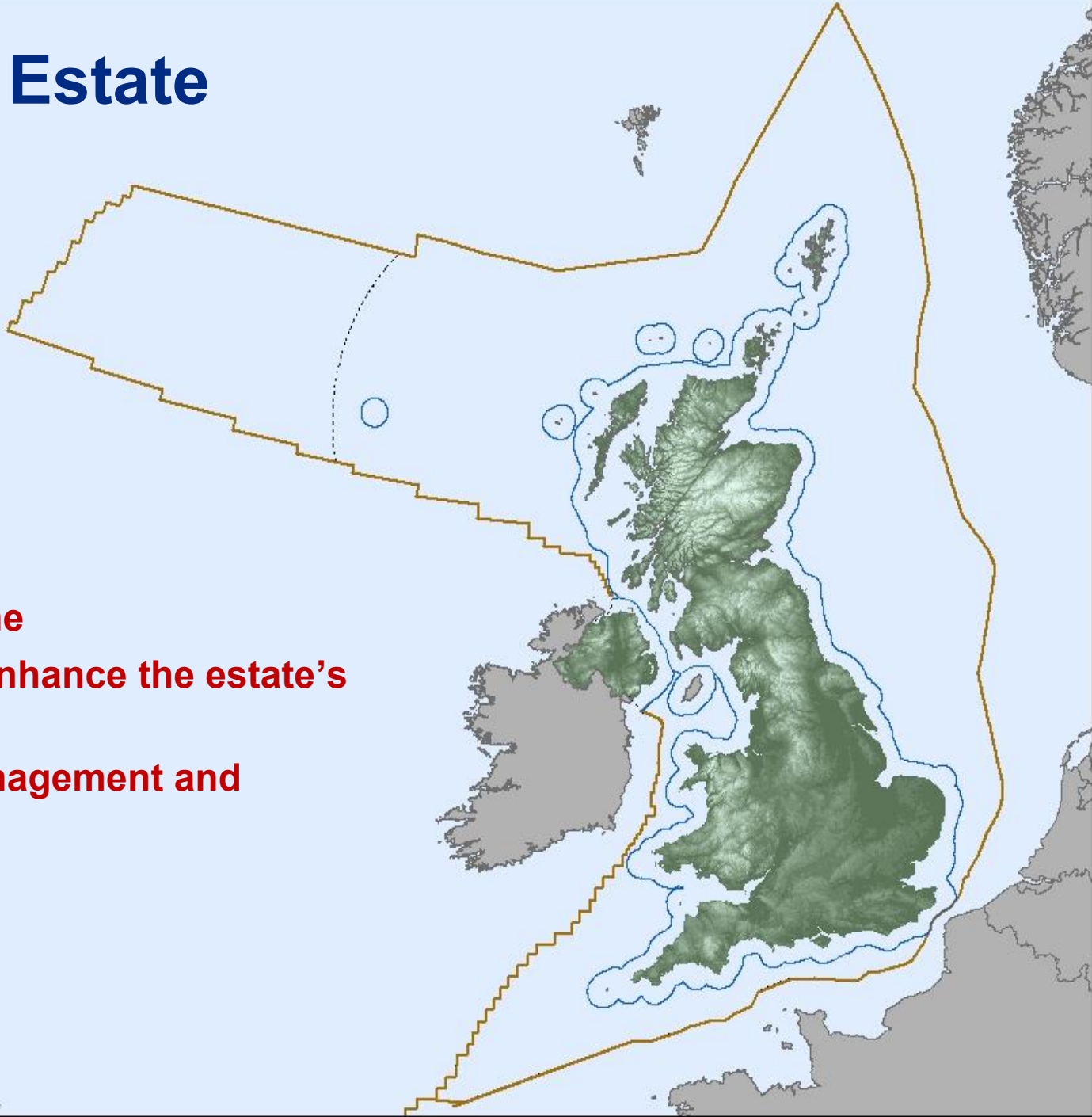
The Crown Estate is an Estate in Land which includes:

- “ **The Urban Estate:** Substantial blocks of commercial and residential property including Regent Street & Pall Mall
- “ **The Rural Estate:** Approximately 110,000 hectares of agricultural land
- “ and



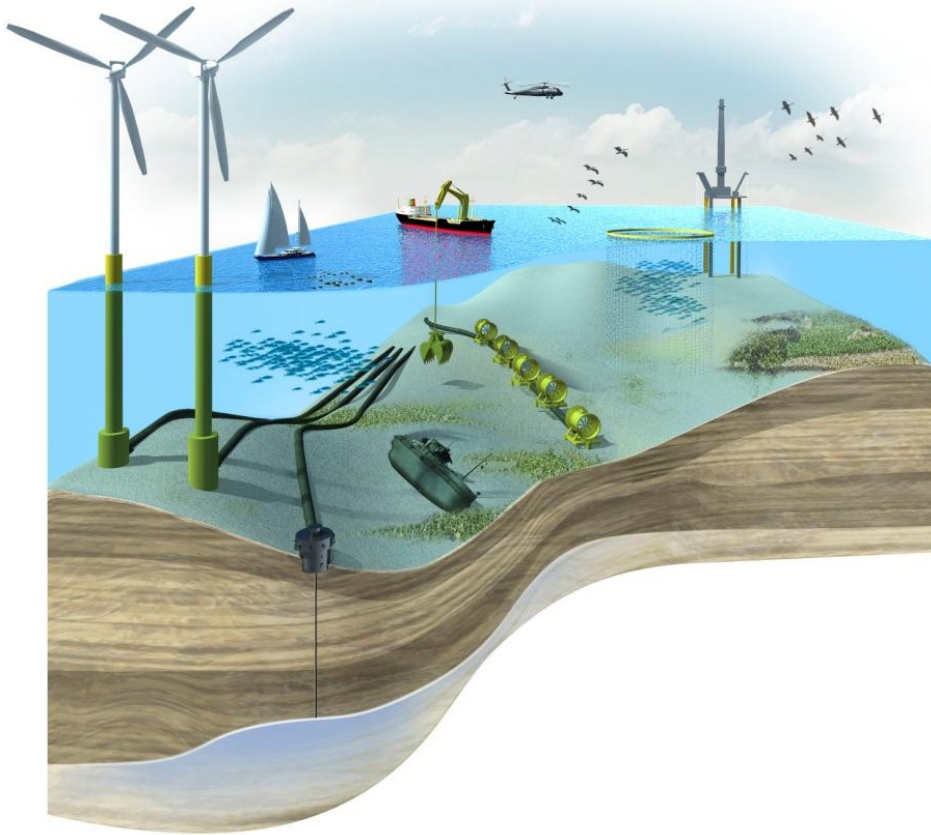
The Marine Estate

- ❖ 30million hectares
- ❖ 22000km of coast line
- ❖ A responsibility to enhance the estate's value
- ❖ Subject to good management and stewardship
- ❖ A monopoly

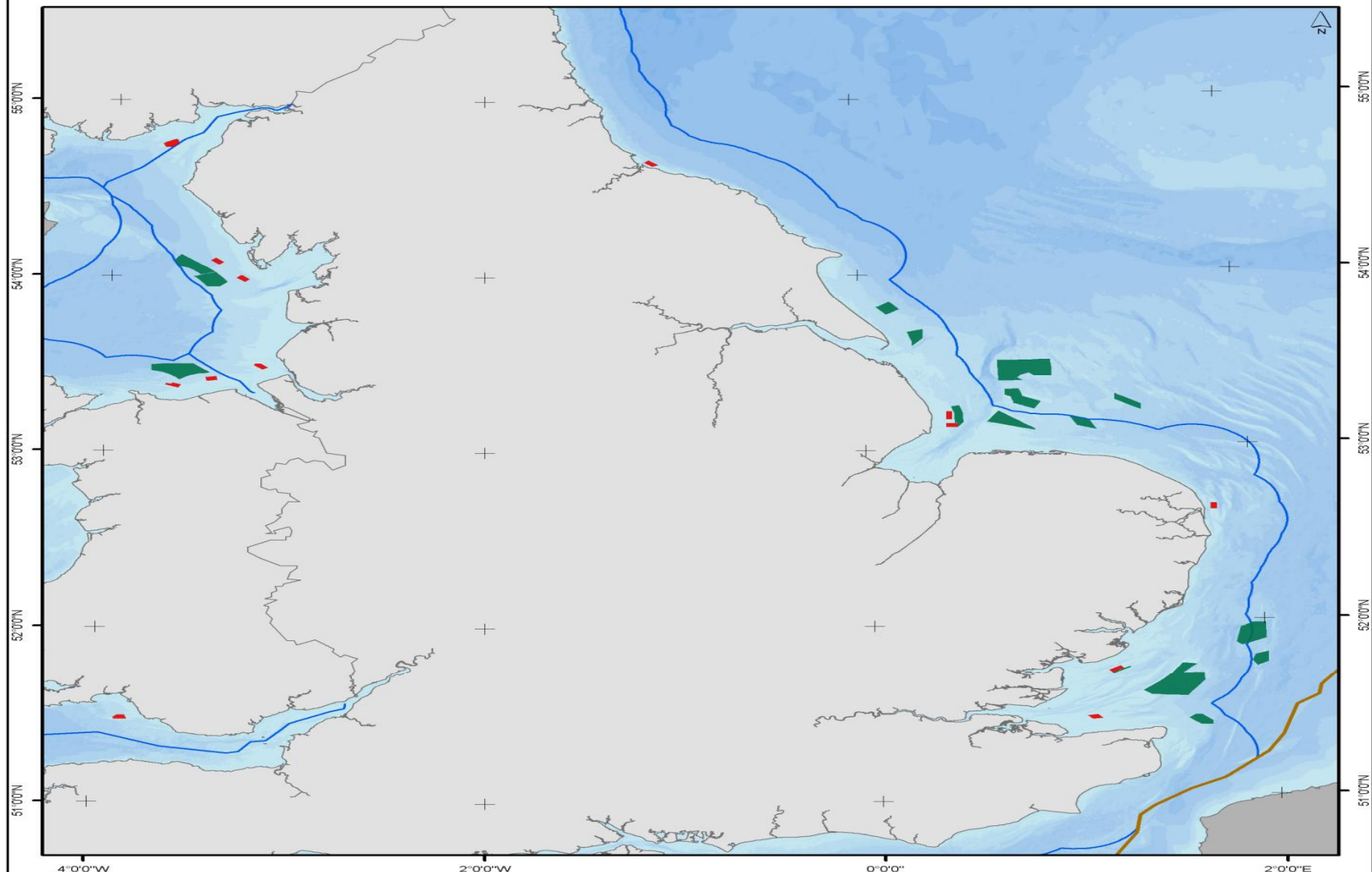


The Marine Estate does not include

- “ Water column
- “ Fisheries
- “ Rights to Oil, Gas and Coal
- “ Public rights of navigation



Offshore Wind - Round 1 and 2 Wind Farm Projects



- Round 1 Wind Farm Project
- Round 2 Wind Farm Project
- Bathymetry
- Shallow
- Deep
- Territorial Waters
- UK Continental Shelf
- Europe
- United Kingdom



Offshore Wind - Round 1 and 2 Wind Farm Projects
1 October 2009

0 20 40 80 Kilometers

Positions shown relative to WGS 84
© Crown Copyright 1 October 2009. Reproduction in whole or part is not permitted without prior consent of The Crown Estate.
© British Crown and SeaZone Solutions Limited. All rights reserved. Product Licence No. 012009.17.

16 New Burlington Place London W1S 2HX
Tel: 020 7851 5080

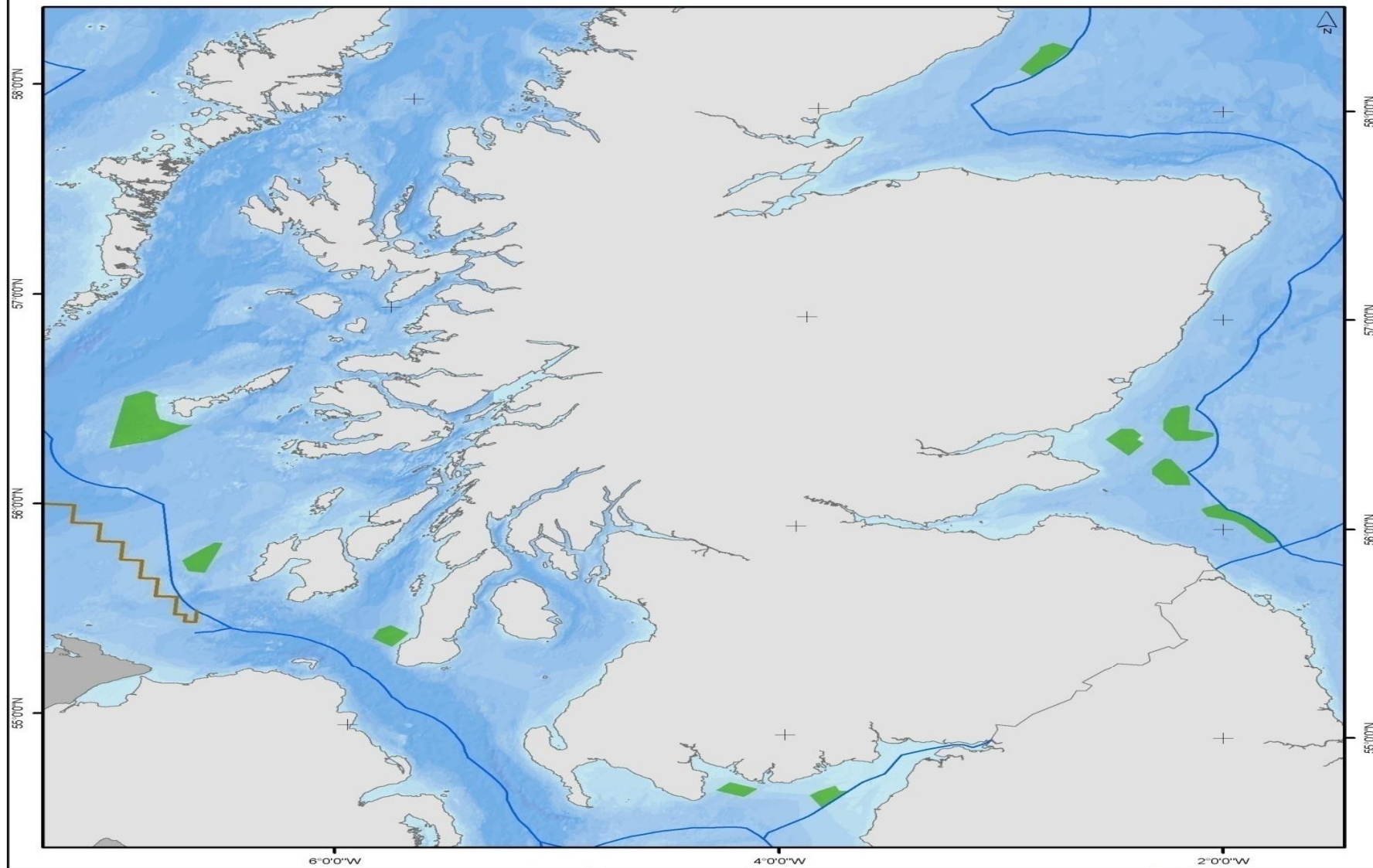
6 Bell's Brae Edinburgh EH4 3BJ
Tel: 0131 260 6070

www.thecrownestate.co.uk

MaRS
Marine Resource System
Size : A4 Author : JK
1:2,400,000 QA : KR



Offshore Wind - Scottish Wind Farm Exclusivity Awards



- Scottish Wind Farm Exclusivity Awards
- Bathymetry**
- Shallow
- Deep
- Territorial Waters
- UK Continental Shelf
- Europe
- United Kingdom



Offshore Wind - Scottish Wind Farm Exclusivity Awards
1 October 2009



Positions shown relative to WGS 84
© Crown Copyright 1 October 2009. Reproduction in whole or part is not permitted without prior consent of The Crown Estate.
© British Crown and SeaZone Solutions Limited. All rights reserved. Product Licence No. 012009.17.

16 New Burlington Place London W1S 2HX
Tel: 020 7851 5080

6 Bell's Brae Edinburgh EH4 3BJ
Tel: 0131 260 6070

www.thecrownestate.co.uk

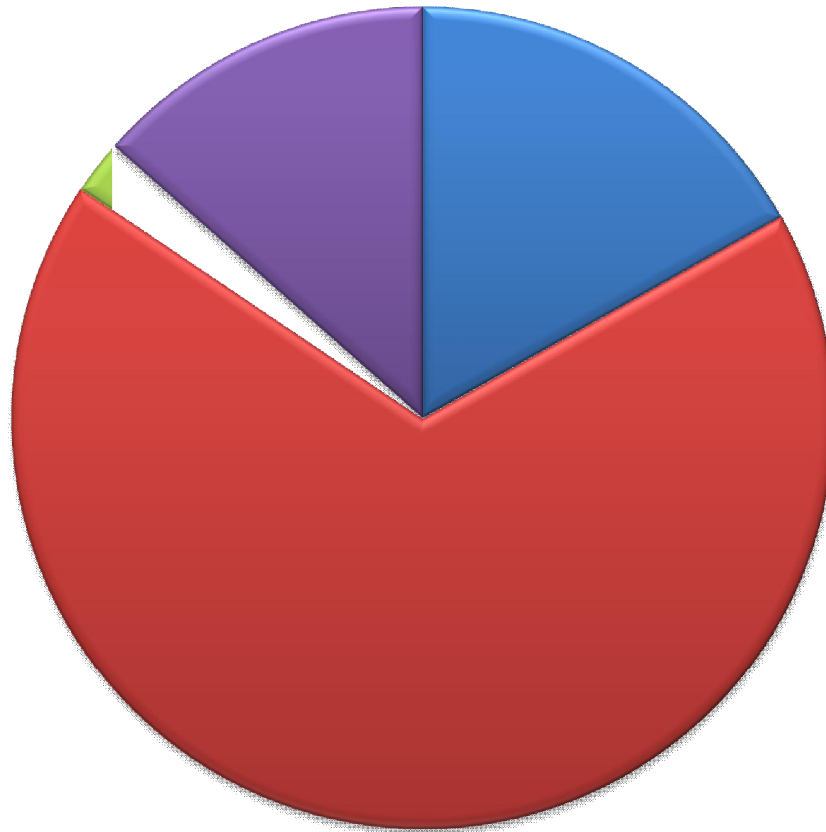
MaRS
Marine Resource System

Size : A4 Author : JK
1:2,000,000 QA : KR



Offshore Wind Energy: GW on the table

47+ GW of installed energy: a third of the UK's electricity demand



■ Rounds 1+2: 8 GW approved

■ Round 3: Bids received for 32GW

■ Round 2 Extension: Interest in 1 GW plus

■ Scottish Territorial Waters: Option leases awarded for 6.4 GW

The Prize

- “ 47 GW of energy from the UK waters from all programmes
- “ 15% UK energy
- “ 30% UK electricity
- “ UK energy security of supply
- “ Climate change targets
- “ Investment of £100 billion+
- “ Jobs: 50,000+
- “ Business development opportunities



The Challenges

- “ Planning and consenting process
 - . Zone development plans
 - . Environmental Impact Assessment
 - . Infrastructure Planning Commission
 - . UK Government

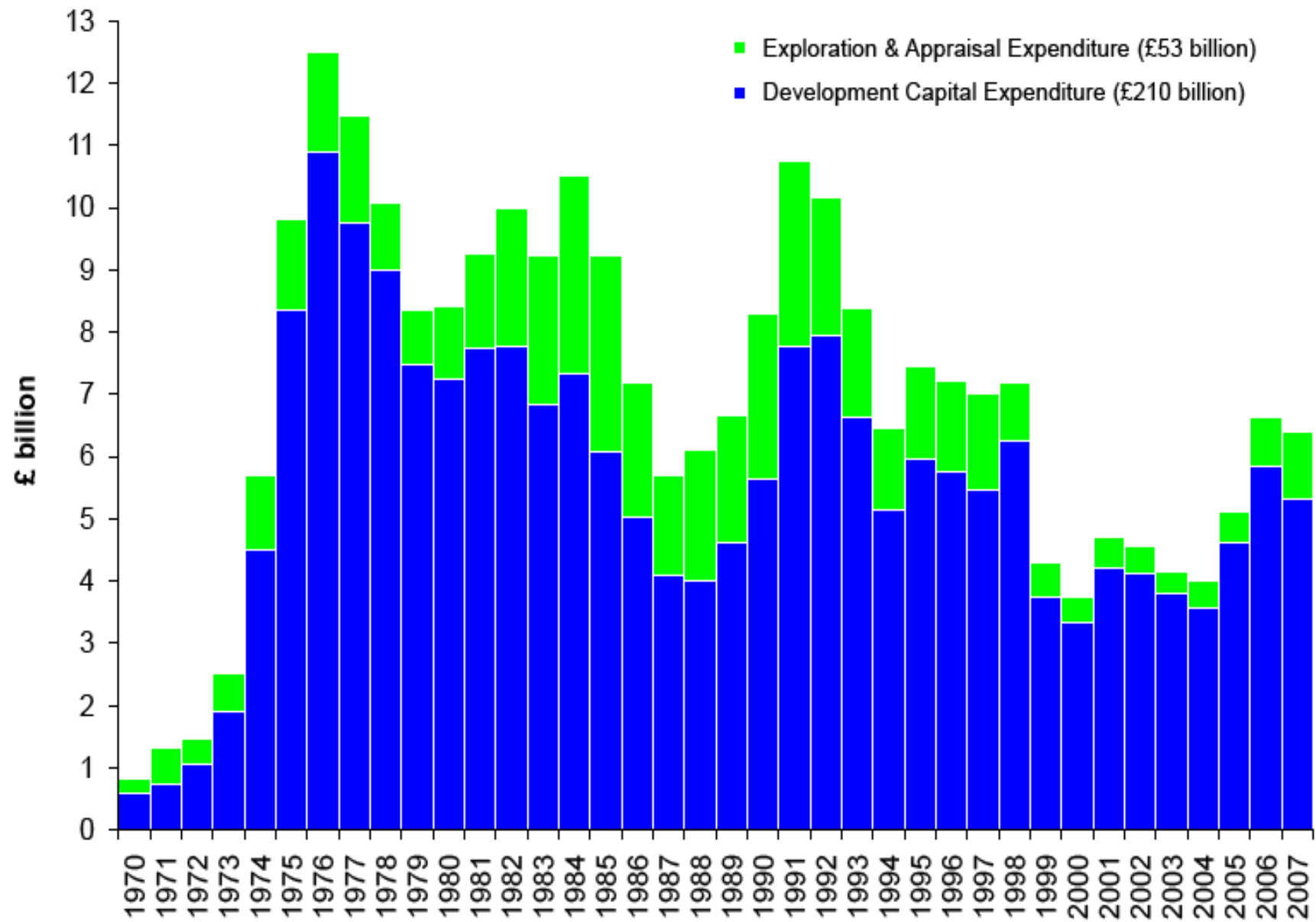


“ Grid

“ Ports, harbours and manufacturing sites

“ Supply chain: turbines and cables

UKCS Capital Expenditure 1970–2007 (2007 prices)



Supply Chain Events

February/March 2010

- “ All elements that will contribute to offshore wind energy production: components; skilled workforce; infrastructure; and economic environment.
- “ A partnership with the Welsh Assembly Government, Department of Energy and Climate Change, Northern Ireland Assembly and Scottish Government along with the Regional Development Agencies.
- “ The 12 events will act as a ‘marketplace’ to bring together developers and their current and potential supply chain.

UK Offshore Wind Supply Chain Events 2010

Aberdeen 28th January

Loughborough 25th February

Inverness 2nd February

Doncaster 26th February

Glasgow 4th February

Lowestoft 4th March

Pembrokeshire 11th February

Bristol 9th March

Chester-le-Street 17th February

Liverpool 11th March

Gatwick 23rd February

Belfast 16th March

